



CHESAPEAKE
GOLD CORP.

July 2024

Garnet Skarn and Hornfels	Drill holes 2024	Quartz Veins	Dirt Road
Breccia Dike	Drill holes 2023	Old Adits	Contours 5 m
Red Beds	Drill holes 2018		
Limestones	Drill hole trace		
Metaconglomerates and Sandstones			



Metres

Chesapeake Gold Corp
Minerales el Prado S.A de C.V.

Lucy Gold Zone

GEOLOGIC, SAMPLING AND DRILLING MAP

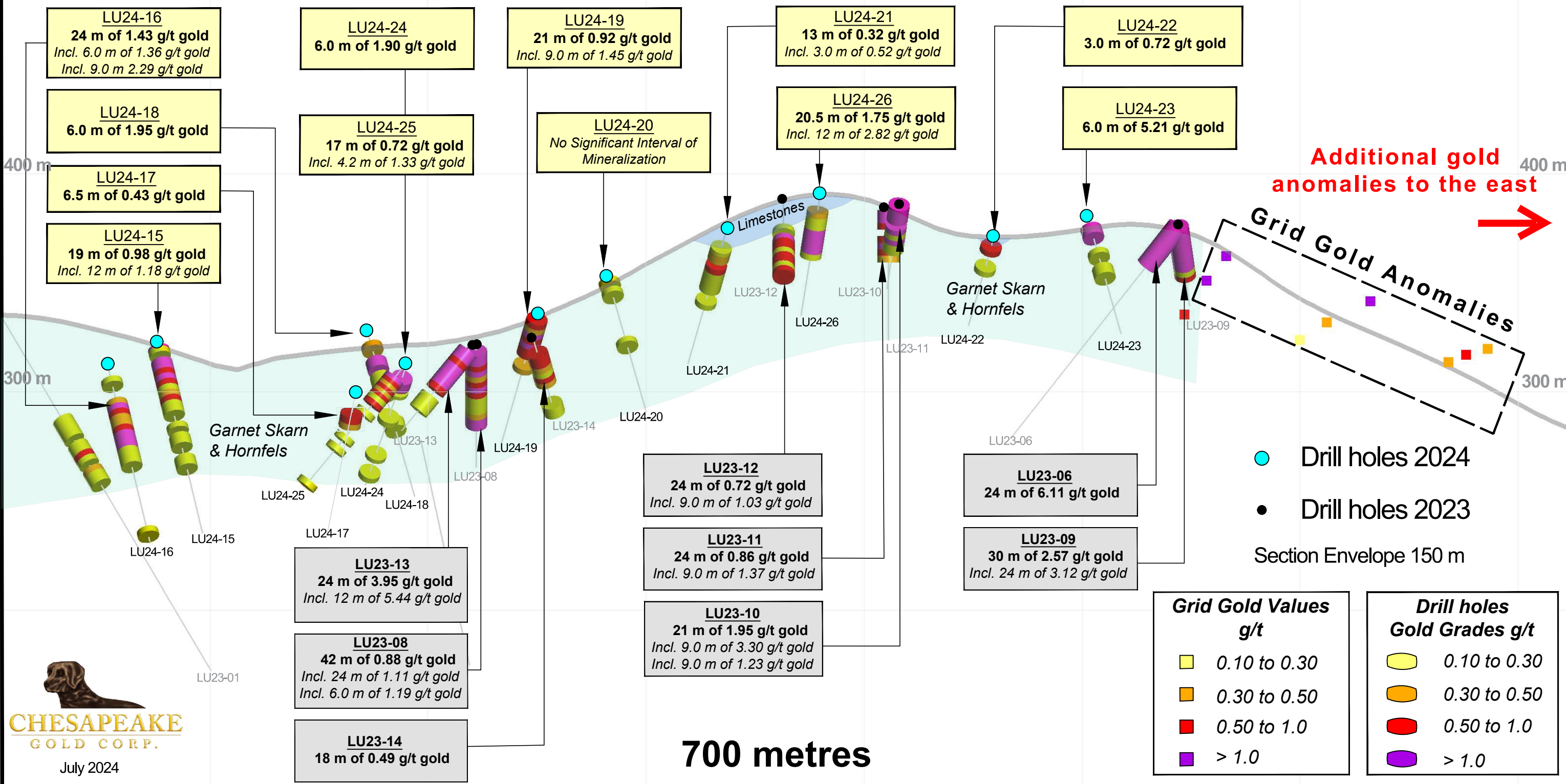
A

Longitudinal Section - Looking North Lucy Project

A'

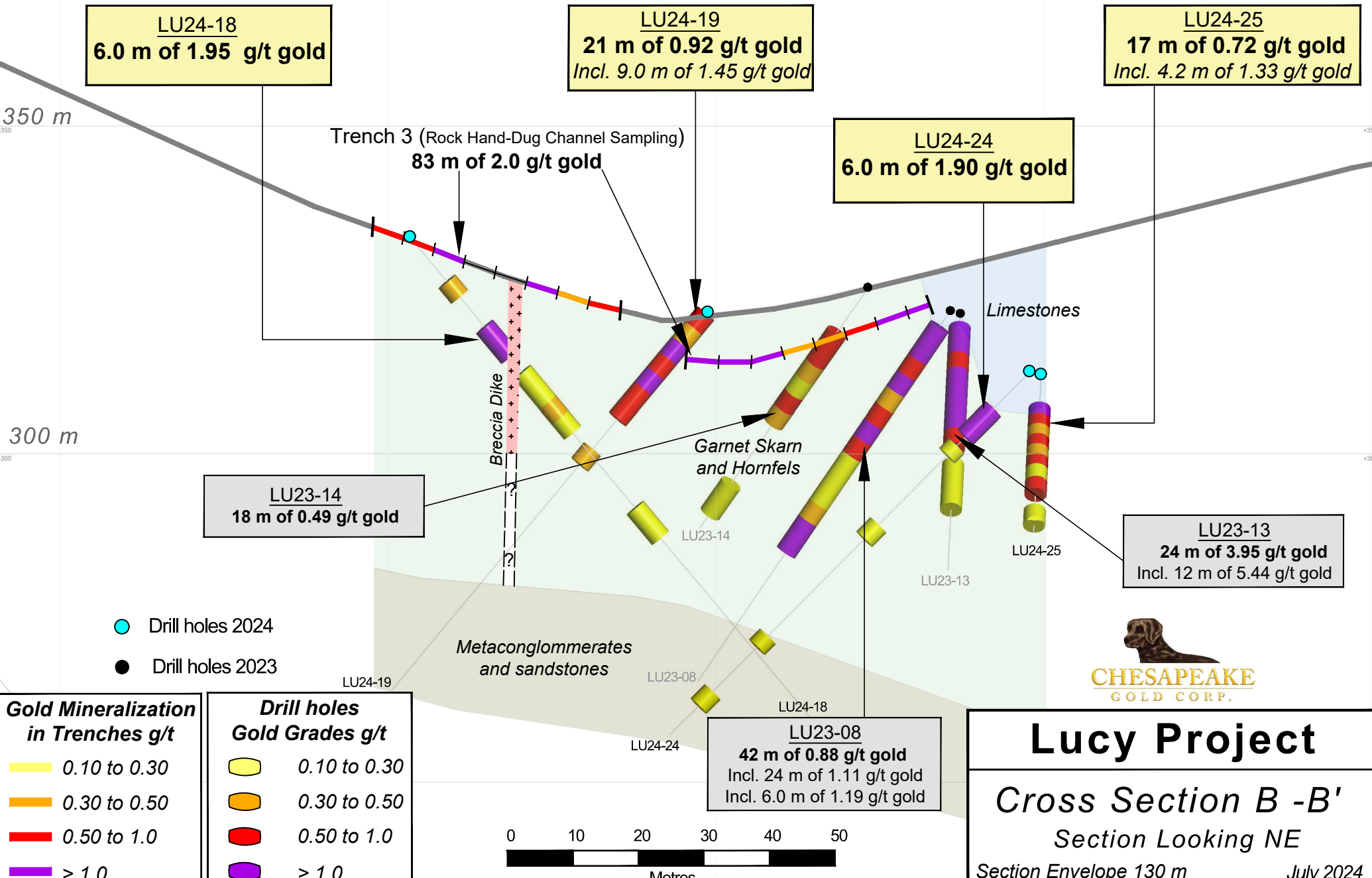
500 m

500 m



July 2024

Cross Section B - B'



Lucy Project
Cross Section B - B'
 Section Looking NE
 Section Envelope 130 m
 July 2024

Cross Section C - C'

350 m

300 m

250 m

LU24-15
19 m of 0.98 g/t gold
Incl. 12 m of 1.18 g/t gold

LU24-16
24 m of 1.43 g/t gold
Incl. 6.0 m of 1.36 g/t gold
Incl. 9.0 m of g/t 2.29 gold

LU24-17
6.5 m of 0.43 g/t gold

Trench 1 (Rock Saw)
55 m of 1.74 g/t gold

Trench 2
 (Rock Hand-Dug Channel Sampling)
20 m of 1.42 g/t gold

Garnet Skarn
 and Hornfels

Breccia Dike

Limestones

Metaconglomerates
 and sandstones



- Drill holes 2024
- Drill holes 2023

LU23-01
18 m of 0.28 g/t gold
Incl. 3.0 m of 0.57 g/t gold

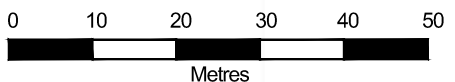
LU24-15 LU24-16 LU24-17

Gold Mineralization in Trenches g/t

	0.10 to 0.30
	0.30 to 0.50
	0.50 to 1.0
	> 1.0

Drill holes Gold Grades g/t

	0.10 to 0.30
	0.30 to 0.50
	0.50 to 1.0
	> 1.0



Lucy Project

Cross Section C - C'

Section Looking NE

Section Envelope 130 m

July 2024

Assay Highlights from the 12 Hole Lucy Drilling Campaign

Hole ID	From (m)	To (m)	Width (m)	Au (g/t)
LU24-15	1.75	21	19.25	0.98
Including	9	21	12	1.18
LU24-16	24	48	24	1.43
Including	24	30	6	1.36
Including	39	48	9	2.29
LU24-17	11.5	18	6.5	0.43
LU24-18	18	24	6	1.95
LU24-19	0	21	21	0.92
Including	6	15	9	1.45
LU24-20	No Significant Interval of Mineralization			
LU24-21	10.9	24	13.1	0.32
Including	21	24	3	0.52
LU24-22	3	6	3	0.72
LU24-23	0	6	6	5.21
LU24-24	8	14	6	1.90
LU24-25	6.85	23.9	17.05	0.72
Including	6.85	11	4.15	1.33
LU24-26	9.5	30	20.5	1.75
Including	18	30	12	2.82



1.25 m of 3.37 g/t gold

Sample P-544

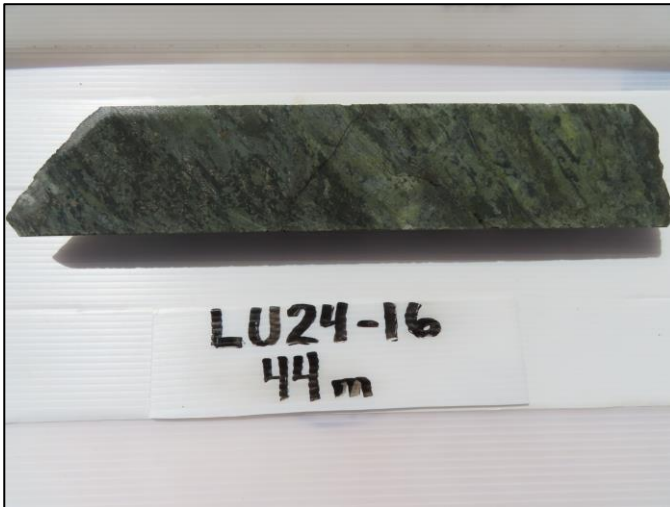
From: 1.75 m To : 3.0 m



3.0 m of 2.05 g/t gold

Sample P-590

From: 24 m To : 27 m



3.0 m of 4.21 g/t gold

Sample P-597

From: 42 m To : 45 m



3.0 m of 2.10 g/t gold

Sample P-650

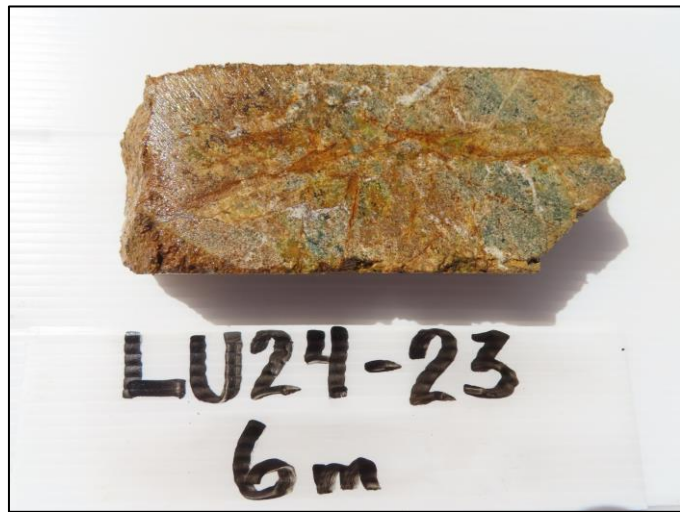
From: 18 m To : 21 m



3.0 m of 7.17 g/t gold

Sample P-782

From: 0 m To : 3.0 m



3.0 m of 3.25 g/t gold

Sample P-783

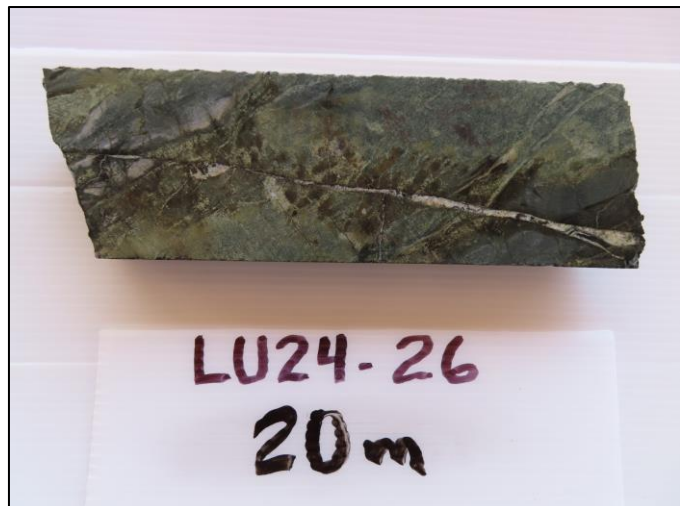
From: 3.0 m To : 6.0 m



2.0 m of 2.84 g/t gold

Sample P-810

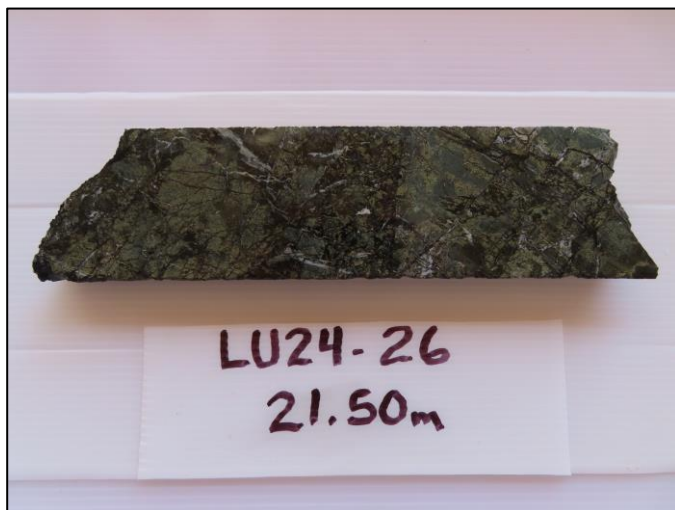
From: 10 m To : 12 m



3.0 m of 2.89 g/t gold

Sample P-870

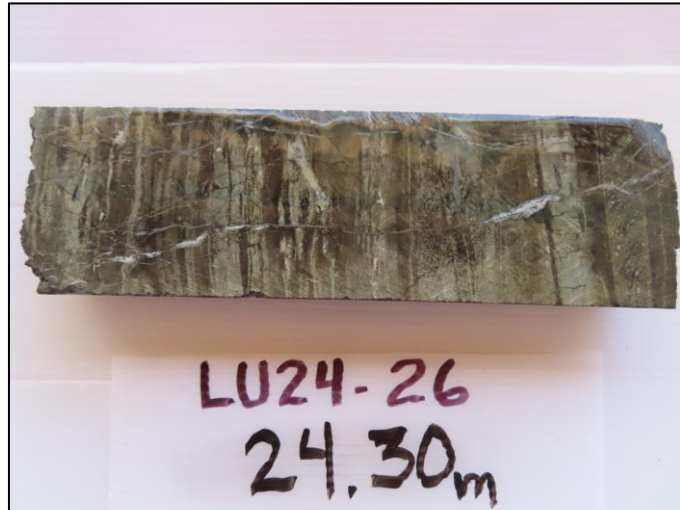
From: 18 m To : 21 m



3.0 m of 2.28 g/t gold

Sample P-871

From: 21 m To : 24 m



3.0 m of 4.24 g/t gold

Sample P-872

From: 24 m To : 27 m

SITE VISIT PHOTOS



Historic base metal old working



Portable rig for minor environmental impact



High voltage national grid near site

Lucy Project
Collar Data - Drill holes 2024

Hole_Id	Depth m	Dip	Azimuth
LU24-15	105	-55	160
LU24-16	99	-55	160
LU24-17	75	-60	340
LU24-18	99	-50	160
LU24-19	75	-50	340
LU24-20	78	-50	160
LU24-21	81	-50	340
LU24-22	51	-50	340
LU24-23	63	-50	160
LU24-24	78	-45	340
LU24-25	72	-50	260
LU24-26	63	-65	340

Lucy Project
Complete Assay Results Drill holes 2024

Hole_ID	From (m)	To (m)	Interval (m)	Au g/t	Ag g/t	Zn %
LU24-15	1.75	3	1.25	3.370	10.10	4.970
LU24-15	3	6	3	0.125	0.90	0.487
LU24-15	6	9	3	0.018	<0.5	0.046
LU24-15	9	12	3	1.250	3.70	0.333
LU24-15	12	15	3	1.500	1.50	0.215
LU24-15	15	18	3	0.704	1.00	0.229
LU24-15	18	21	3	1.260	1.20	0.348
LU24-15	21	24	3	0.611	0.60	0.143
LU24-15	24	27	3	0.155	0.50	0.043
LU24-15	27	30	3	0.353	0.60	0.041
LU24-15	30	33	3	0.835	0.80	0.024
LU24-15	33	36	3	0.248	0.70	0.025
LU24-15	36	39	3	0.169	0.50	0.019
LU24-15	39	42	3	0.094	0.60	0.021
LU24-15	42	45	3	0.058	0.70	0.017
LU24-15	45	48	3	0.201	0.60	0.022
LU24-15	48	51	3	0.068	<0.5	0.021
LU24-15	51	54	3	0.194	0.80	0.022
LU24-15	54	57	3	0.124	0.50	0.069
LU24-15	57	60	3	0.093	0.60	0.017
LU24-15	60	63	3	0.050	0.50	0.018
LU24-15	63	66	3	0.272	0.70	0.014
LU24-15	66	69	3	0.295	0.50	0.010
LU24-15	69	72	3	0.002	<0.5	0.006
LU24-15	72	75	3	0.040	2.20	0.009
LU24-15	75	78	3	0.006	<0.5	0.005
LU24-15	78	81	3	0.008	0.50	0.005
LU24-15	81	84	3	0.028	1.10	0.006
LU24-15	84	87	3	0.050	1.30	0.006
LU24-15	87	90	3	0.033	0.50	0.006
LU24-15	90	93	3	0.090	<0.5	0.005
LU24-15	93	96	3	0.012	<0.5	0.005

Lucy Project
Complete Assay Results Drill holes 2024

Hole_ID	From (m)	To (m)	Interval (m)	Au g/t	Ag g/t	Zn %
LU24-15	96	99	3	0.032	<0.5	0.005
LU24-15	99	102	3	0.035	<0.5	0.006
LU24-15	102	105	3	0.018	<0.5	0.005
LU24-16	3	6	3	0.043	1.50	0.150
LU24-16	6	9	3	0.015	2.10	0.137
LU24-16	9	12	3	0.162	18.10	1.180
LU24-16	12	15	3	0.064	2.60	0.455
LU24-16	15	18	3	0.058	2.20	0.402
LU24-16	18	21	3	0.028	0.60	0.209
LU24-16	21	24	3	0.361	1.40	0.967
LU24-16	24	27	3	2.050	5.50	1.640
LU24-16	27	30	3	0.661	0.80	0.218
LU24-16	30	33	3	0.449	1.40	0.209
LU24-16	33	36	3	0.418	1.20	0.178
LU24-16	36	39	3	0.944	1.90	0.043
LU24-16	39	42	3	1.625	1.20	0.017
LU24-16	42	45	3	4.210	10.30	0.243
LU24-16	45	48	3	1.045	12.40	0.035
LU24-16	48	51	3	0.154	20.40	0.042
LU24-16	51	54	3	0.107	22.70	0.040
LU24-16	54	57	3	0.177	94.60	0.098
LU24-16	57	60	3	0.014	2.60	0.015
LU24-16	60	63	3	0.041	1.50	0.017
LU24-16	63	66	3	0.074	7.50	0.037
LU24-16	66	69	3	0.024	0.50	0.007
LU24-16	69	72	3	0.028	0.50	0.014
LU24-16	72	75	3	0.040	2.10	0.023
LU24-16	75	78	3	0.011	<0.5	0.045
LU24-16	78	81	3	0.013	0.60	0.008
LU24-16	81	84	3	0.005	<0.5	0.007
LU24-16	84	87	3	0.018	0.60	0.008
LU24-16	87	90	3	0.014	<0.5	0.053

Lucy Project
Complete Assay Results Drill holes 2024

Hole_ID	From (m)	To (m)	Interval (m)	Au g/t	Ag g/t	Zn %
LU24-16	90	93	3	0.016	<0.5	0.008
LU24-16	93	96	3	0.168	<0.5	0.070
LU24-16	96	99	3	0.023	<0.5	0.008
LU24-17	0	3	3	0.006	<0.5	0.022
LU24-17	3	6	3	0.002	<0.5	0.033
LU24-17	6	9	3	0.004	<0.5	0.052
LU24-17	9	11.5	2.5	0.002	<0.5	0.013
LU24-17	11.5	15	3.5	0.526	16.70	3.790
LU24-17	15	18	3	0.314	32.40	1.655
LU24-17	18	21	3	0.005	0.60	0.025
LU24-17	21	24	3	0.028	1.30	0.018
LU24-17	24	27	3	0.003	<0.5	0.009
LU24-17	27	30	3	0.007	0.60	0.009
LU24-17	30	33	3	0.002	<0.5	0.006
LU24-17	33	36	3	0.006	1.00	0.008
LU24-17	36	39	3	0.010	3.60	0.016
LU24-17	39	42	3	0.013	0.70	0.010
LU24-17	42	45	3	0.010	0.80	0.013
LU24-17	45	48	3	0.024	1.40	0.012
LU24-17	48	51	3	0.047	4.90	0.028
LU24-17	51	54	3	0.014	<0.5	0.007
LU24-17	54	57	3	0.013	<0.5	0.007
LU24-17	57	60	3	0.061	<0.5	0.007
LU24-17	60	63	3	0.050	<0.5	0.006
LU24-17	63	66	3	0.010	<0.5	0.006
LU24-17	66	69	3	0.020	<0.5	0.006
LU24-17	69	72	3	0.022	<0.5	0.006
LU24-17	72	75	3	0.014	<0.5	0.005
LU24-18	3	6	3	0.070	0.70	0.405
LU24-18	6	9	3	0.036	0.70	0.358
LU24-18	9	12	3	0.365	1.40	0.301
LU24-18	12	15	3	0.076	1.60	0.487

Lucy Project
Complete Assay Results Drill holes 2024

Hole_ID	From (m)	To (m)	Interval (m)	Au g/t	Ag g/t	Zn %
LU24-18	15	18	3	0.069	0.90	0.167
LU24-18	18	21	3	2.100	4.30	0.439
LU24-18	21	24	3	1.795	7.30	0.840
LU24-18	24	27	3	0.051	<0.5	0.034
LU24-18	27	30	3	0.153	<0.5	0.090
LU24-18	30	33	3	0.175	<0.5	0.074
LU24-18	33	36	3	0.420	<0.5	0.086
LU24-18	36	39	3	0.159	<0.5	0.041
LU24-18	39	42	3	0.006	<0.5	0.023
LU24-18	42	45	3	0.012	2.10	0.022
LU24-18	45	48	3	0.014	<0.5	0.018
LU24-18	48	51	3	0.006	<0.5	0.017
LU24-18	51	54	3	0.028	<0.5	0.018
LU24-18	54	57	3	0.100	<0.5	0.044
LU24-18	57	60	3	0.118	0.50	0.026
LU24-18	60	63	3	0.075	<0.5	0.014
LU24-18	63	66	3	0.081	<0.5	0.081
LU24-18	66	69	3	0.007	<0.5	0.013
LU24-18	69	72	3	0.011	<0.5	0.007
LU24-18	72	75	3	0.008	<0.5	0.009
LU24-18	75	78	3	0.003	<0.5	0.006
LU24-18	78	81	3	0.003	<0.5	0.006
LU24-18	81	84	3	<0.001	<0.5	0.006
LU24-18	84	87	3	0.001	<0.5	0.006
LU24-18	87	90	3	0.002	<0.5	0.006
LU24-18	90	93	3	0.002	<0.5	0.006
LU24-18	93	96	3	0.002	<0.5	0.006
LU24-18	96	99	3	0.002	0.80	0.011
LU24-19	0	3	3	0.523	7.80	0.037
LU24-19	3	6	3	0.460	4.20	0.029
LU24-19	6	9	3	1.720	5.40	0.032
LU24-19	9	12	3	0.998	4.00	0.043

Lucy Project
Complete Assay Results Drill holes 2024

Hole_ID	From (m)	To (m)	Interval (m)	Au g/t	Ag g/t	Zn %
LU24-19	12	15	3	1.635	4.30	0.029
LU24-19	15	18	3	0.573	1.30	0.031
LU24-19	18	21	3	0.528	1.00	0.014
LU24-19	21	24	3	0.012	0.50	0.019
LU24-19	24	27	3	0.023	0.60	0.026
LU24-19	27	30	3	0.319	1.20	0.026
LU24-19	30	33	3	0.007	<0.5	0.022
LU24-19	33	36	3	0.013	<0.5	0.022
LU24-19	36	39	3	0.006	<0.5	0.022
LU24-19	39	42	3	0.017	<0.5	0.016
LU24-19	42	45	3	0.015	<0.5	0.021
LU24-19	45	48	3	0.006	<0.5	0.013
LU24-19	48	51	3	0.016	<0.5	0.018
LU24-19	51	54	3	0.032	<0.5	0.020
LU24-19	54	56.7	2.7	0.011	0.50	0.009
LU24-19	56.7	60	3.3	0.011	0.50	0.007
LU24-19	60	63	3	0.005	0.70	0.005
LU24-19	63	66	3	0.003	0.50	0.006
LU24-19	66	69	3	0.017	<0.5	0.007
LU24-19	69	72	3	0.003	0.50	0.005
LU24-19	72	75	3	0.006	0.50	0.007
LU24-20	0	3	3	0.257	0.50	0.017
LU24-20	3	6	3	0.077	<0.5	0.018
LU24-20	6	9	3	0.151	<0.5	0.013
LU24-20	9	12	3	0.016	<0.5	0.029
LU24-20	12	15	3	0.021	0.90	0.027
LU24-20	15	18	3	0.087	0.80	0.020
LU24-20	18	21	3	0.011	0.50	0.009
LU24-20	21	24	3	0.064	0.50	0.007
LU24-20	24	27	3	0.004	<0.5	0.007
LU24-20	27	30	3	0.002	<0.5	0.008
LU24-20	30	33	3	0.001	<0.5	0.007

Lucy Project
Complete Assay Results Drill holes 2024

Hole_ID	From (m)	To (m)	Interval (m)	Au g/t	Ag g/t	Zn %
LU24-20	33	36	3	0.003	<0.5	0.005
LU24-20	36	39	3	0.101	0.70	0.006
LU24-20	39	42	3	0.001	0.50	0.007
LU24-20	42	45	3	<0.001	0.50	0.006
LU24-20	45	48	3	<0.001	<0.5	0.007
LU24-20	48	51	3	0.002	<0.5	0.006
LU24-20	51	54	3	0.003	<0.5	0.005
LU24-20	54	57	3	0.004	0.80	0.017
LU24-20	57	60	3	0.006	<0.5	0.012
LU24-20	60	63	3	0.002	<0.5	0.006
LU24-20	63	66	3	0.001	<0.5	0.005
LU24-20	66	69	3	0.003	<0.5	0.005
LU24-20	69	72	3	0.003	<0.5	0.005
LU24-20	72	75	3	0.004	<0.5	0.005
LU24-20	75	78	3	0.008	0.50	0.007
LU24-21	0	3	3	0.007	<0.5	0.009
LU24-21	3	6	3	0.001	<0.5	0.006
LU24-21	6	9	3	0.004	<0.5	0.011
LU24-21	9	10.9	1.9	0.002	<0.5	0.080
LU24-21	10.9	13	2.1	0.295	2.60	4.950
LU24-21	13	15	2	0.329	4.80	10.700
LU24-21	15	18	3	0.354	4.10	7.070
LU24-21	18	21	3	0.073	1.40	0.943
LU24-21	21	24	3	0.523	5.30	5.250
LU24-21	24	27	3	0.130	3.40	1.225
LU24-21	27	30	3	0.272	1.40	0.063
LU24-21	30	33	3	0.224	2.30	0.029
LU24-21	33	36	3	0.232	0.60	0.024
LU24-21	36	39	3	0.061	<0.5	0.013
LU24-21	39	42	3	0.051	<0.5	0.011
LU24-21	42	45	3	0.135	<0.5	0.011
LU24-21	45	48	3	<0.001	<0.5	0.009

Lucy Project
Complete Assay Results Drill holes 2024

Hole_ID	From (m)	To (m)	Interval (m)	Au g/t	Ag g/t	Zn %
LU24-21	48	51	3	0.003	<0.5	0.010
LU24-21	51	54	3	0.011	<0.5	0.010
LU24-21	54	57	3	0.002	<0.5	0.009
LU24-21	57	60	3	0.004	<0.5	0.010
LU24-21	60	63	3	0.002	<0.5	0.010
LU24-21	63	66	3	0.003	<0.5	0.006
LU24-21	66	69	3	0.002	<0.5	0.007
LU24-21	69	72	3	0.002	<0.5	0.009
LU24-21	72	75	3	0.004	<0.5	0.008
LU24-21	75	78	3	0.003	<0.5	0.010
LU24-21	78	81	3	0.002	<0.5	0.024
LU24-22	0	3	3	0.070	<0.5	0.096
LU24-22	3	6	3	0.722	0.90	1.540
LU24-22	6	9.84	3.84	0.062	<0.5	1.480
LU24-22	9.84	12	2.16	0.002	<0.5	0.008
LU24-22	12	15	3	0.027	<0.5	0.009
LU24-22	15	18	3	0.217	<0.5	0.033
LU24-22	18	21	3	0.025	<0.5	0.017
LU24-22	21	23.19	2.19	0.004	0.50	0.012
LU24-22	23.19	27	3.81	0.038	0.90	0.056
LU24-22	27	30	3	0.011	<0.5	0.047
LU24-22	30	33	3	0.019	<0.5	0.041
LU24-22	33	36	3	0.031	0.60	0.110
LU24-22	36	39	3	0.022	1.00	0.071
LU24-22	39	42	3	0.040	4.20	0.034
LU24-22	42	45	3	0.016	1.20	0.082
LU24-22	45	48	3	0.014	1.00	0.063
LU24-22	48	51	3	0.009	0.70	0.050
LU24-23	0	3	3	7.080	2.50	0.021
LU24-23	3	6	3	3.250	1.80	0.019
LU24-23	6	9	3	0.050	0.80	0.017
LU24-23	9	12	3	0.079	1.20	0.027

Lucy Project
Complete Assay Results Drill holes 2024

Hole_ID	From (m)	To (m)	Interval (m)	Au g/t	Ag g/t	Zn %
LU24-23	12	15	3	0.036	0.90	0.021
LU24-23	15	18	3	0.134	0.60	0.032
LU24-23	18	21	3	0.089	0.50	0.041
LU24-23	21	24	3	0.080	0.70	0.026
LU24-23	24	27	3	0.250	0.60	0.021
LU24-23	27	30	3	0.215	0.70	0.037
LU24-23	30	33	3	0.088	0.70	0.019
LU24-23	33	35	2	0.019	0.70	0.018
LU24-23	35	37.9	2.9	0.032	1.50	0.012
LU24-23	37.9	40.4	2.5	0.009	0.90	0.010
LU24-23	40.4	44	3.6	0.007	0.50	0.011
LU24-23	44	47.5	3.5	0.014	0.70	0.023
LU24-23	47.5	51	3.5	0.060	1.20	0.033
LU24-23	51	54	3	0.009	1.80	0.062
LU24-23	54	57	3	0.026	0.70	0.039
LU24-23	57	60	3	0.004	<0.5	0.032
LU24-23	60	63	3	0.004	<0.5	0.032
LU24-24	0	3	3	0.003	<0.5	0.002
LU24-24	3	6	3	0.003	<0.5	0.010
LU24-24	6	8	2	0.024	0.50	0.122
LU24-24	8	10	2	1.345	3.80	4.650
LU24-24	10	12	2	2.840	2.80	4.780
LU24-24	12	14	2	1.525	3.80	0.687
LU24-24	14	16	2	0.093	11.10	0.160
LU24-24	16	18	2	0.244	27.30	0.114
LU24-24	18	21	3	0.046	16.90	0.040
LU24-24	21	24	3	0.048	17.60	0.079
LU24-24	24	27	3	0.038	15.00	0.195
LU24-24	27	30	3	0.031	14.80	0.115
LU24-24	30	33	3	0.011	16.40	0.045
LU24-24	33	36	3	0.129	9.80	0.501
LU24-24	36	39	3	0.010	0.80	0.016

Lucy Project
Complete Assay Results Drill holes 2024

Hole_ID	From (m)	To (m)	Interval (m)	Au g/t	Ag g/t	Zn %
LU24-24	39	42	3	0.009	<0.5	0.016
LU24-24	42	45	3	0.051	0.60	0.016
LU24-24	45	48	3	0.059	1.10	0.018
LU24-24	48	51	3	0.097	1.30	0.029
LU24-24	51	54	3	0.056	<0.5	0.017
LU24-24	54	57	3	0.040	<0.5	0.021
LU24-24	57	59.3	2.3	0.121	<0.5	0.068
LU24-24	59.3	63	3.7	0.011	1.00	0.011
LU24-24	63	66	3	0.029	2.10	0.006
LU24-24	66	69	3	0.020	1.90	0.006
LU24-24	69	72	3	0.169	1.40	0.007
LU24-24	72	75	3	0.006	1.20	0.009
LU24-24	75	78	3	0.005	2.20	0.022
LU24-25	1.75	4.3	2.55	0.008	<0.5	0.009
LU24-25	4.3	6.85	2.55	0.006	<0.5	0.030
LU24-25	6.85	9	2.15	1.895	8.30	6.540
LU24-25	9	11	2	0.716	4.50	4.020
LU24-25	11	13	2	0.489	4.80	0.436
LU24-25	13	15	2	0.860	12.30	4.430
LU24-25	15	17	2	0.434	8.20	1.400
LU24-25	17	19	2	0.625	15.30	0.464
LU24-25	19	21.5	2.5	0.270	11.20	1.725
LU24-25	21.5	23.9	2.4	0.520	6.80	1.460
LU24-25	23.9	27	3.1	0.054	17.90	0.078
LU24-25	27	30	3	0.144	5.10	0.058
LU24-25	30	33	3	0.031	1.10	0.018
LU24-25	33	36	3	0.057	2.90	0.032
LU24-25	36	39	3	0.020	0.70	0.017
LU24-25	39	42	3	0.052	1.00	0.043
LU24-25	42	45	3	0.170	9.70	0.031
LU24-25	45	48	3	0.064	0.80	0.029
LU24-25	48	51	3	0.192	0.90	0.021

Lucy Project
Complete Assay Results Drill holes 2024

Hole_ID	From (m)	To (m)	Interval (m)	Au g/t	Ag g/t	Zn %
LU24-25	51	54	3	0.062	1.00	0.016
LU24-25	54	57.6	3.6	0.086	3.70	0.016
LU24-25	57.6	60	2.4	0.021	1.00	0.005
LU24-25	60	63	3	0.012	1.00	0.007
LU24-25	63	66	3	0.013	0.60	0.005
LU24-25	66	69	3	0.035	1.00	0.009
LU24-25	69	72	3	0.189	0.80	0.005
LU24-26	0.4	3	2.6	0.002	<0.5	0.004
LU24-26	3	6	3	0.009	<0.5	0.009
LU24-26	6	9.5	3.5	0.016	<0.5	0.171
LU24-26	9.5	12	2.5	0.315	1.90	0.484
LU24-26	12	15	3	0.246	<0.5	0.215
LU24-26	15	18	3	0.160	<0.5	0.358
LU24-26	18	21	3	2.890	0.70	0.347
LU24-26	21	24	3	2.280	0.60	0.043
LU24-26	24	27	3	4.240	1.30	0.024
LU24-26	27	30	3	1.865	1.40	0.020
LU24-26	30	33	3	0.136	0.90	0.016
LU24-26	33	36	3	0.043	0.70	0.016
LU24-26	36	39	3	0.005	<0.5	0.010
LU24-26	39	42	3	0.019	0.50	0.009
LU24-26	42	45.2	3.2	0.007	0.60	0.011
LU24-26	45.2	48	2.8	0.003	<0.5	0.011
LU24-26	48	51	3	0.003	<0.5	0.009
LU24-26	51	54	3	0.022	0.60	0.006
LU24-26	54	57	3	0.001	<0.5	0.006
LU24-26	57	60	3	<0.001	0.60	0.008
LU24-26	60	63	3	<0.001	0.50	0.006

GRID SAMPLES



Soil Sample S-02

1.95 g/t gold



Soil Sample S-03

2.82 g/t gold



Soil Sample S-07

1.57 g/t gold

Lucy Project
Complete Assay Results - Grid Samples

Samples_Id	Rock Type	Au g/t	Ag g/t
R-17001	Rock	0.012	<0.5
R-17002	Rock	0.013	0.60
R-17003	Rock	0.015	<0.5
R-17004	Rock	0.015	0.80
R-17005	Rock	0.029	<0.5
R-17006	Rock	0.004	<0.5
R-17007	Rock	0.006	<0.5
R-17008	Rock	0.002	<0.5
R-17009	Rock	0.015	<0.5
R-17010	Rock	0.031	1.40
R-17011	Rock	0.001	<0.5
R-17012	Rock	0.001	<0.5
R-17013	Rock	<0.001	<0.5
R-17014	Rock	0.001	<0.5
R-17015	Rock	0.006	<0.5
R-17016	Rock	0.004	<0.5
R-17017	Rock	0.001	<0.5
R-17018	Rock	0.002	<0.5
R-17019	Rock	0.001	<0.5
R-17020	Rock	0.002	0.50
R-17021	Rock	0.101	4.20
R-17022	Rock	0.004	<0.5
R-17023	Rock	0.005	<0.5
R-17024	Rock	<0.001	<0.5
R-17025	Rock	0.006	<0.5
R-17026	Rock	0.019	0.50
R-17027	Rock	0.016	<0.5
R-17028	Rock	0.004	<0.5
R-17029	Rock	0.005	<0.5
R-17030	Rock	0.021	<0.5
R-17031	Rock	0.514	0.60
R-17032	Rock	0.005	<0.5
R-17033	Rock	0.008	<0.5
R-17034	Rock	<0.001	<0.5
R-17035	Rock	0.003	0.50
R-17036	Rock	<0.001	<0.5
R-17037	Rock	<0.001	<0.5
R-17038	Rock	0.008	<0.5
R-9474	Rock	0.330	51.10
S-01	Soil	0.035	0.38
S-02	Soil	1.950	1.46
S-03	Soil	2.820	2.97
S-04	Soil	0.556	3.88

Lucy Project
Complete Assay Results - Grid Samples

Samples_Id	Rock Type	Au g/t	Ag g/t
S-05	Soil	0.219	1.94
S-06	Soil	0.357	1.84
S-07	Soil	1.570	2.53
S-08	Soil	0.061	4.04
S-09	Soil	0.037	1.29
S-10	Soil	0.017	0.54
S-11	Soil	0.015	0.59
S-12	Soil	0.021	0.43
S-13	Soil	0.029	0.41
S-14	Soil	0.054	1.49
S-15	Soil	0.365	1.85
S-16	Soil	0.846	2.59
S-17	Soil	0.407	5.17
S-18	Soil	0.012	0.64
S-19	Soil	0.008	0.48
S-20	Soil	0.006	0.38
S-21	Soil	0.052	0.85
S-22	Soil	0.045	1.00
S-23	Soil	0.063	0.56
S-24	Soil	0.041	2.25
S-25	Soil	0.003	0.39
S-26	Soil	0.002	0.43
S-27	Soil	0.006	0.88
S-28	Soil	0.021	0.93
S-29	Soil	0.015	1.74
S-30	Soil	0.122	2.32
S-31	Soil	0.148	9.28
S-32	Soil	0.162	7.22
S-33	Soil	0.547	62.50
S-34	Soil	0.221	19.10
S-35	Soil	0.045	2.92
S-36	Soil	0.055	1.80
S-37	Soil	0.007	1.21
S-38	Soil	0.011	1.08
S-39	Soil	0.008	0.49
S-40	Soil	0.010	0.60
S-41	Soil	0.020	0.72
S-42	Soil	0.028	1.02
S-43	Soil	0.059	1.49
S-44	Soil	0.067	3.53
S-45	Soil	0.034	3.53
S-46	Soil	0.054	0.53
S-47	Soil	0.009	1.78

Lucy Project
Complete Assay Results - Grid Samples

Samples_Id	Rock Type	Au g/t	Ag g/t
S-48	Soil	0.007	0.52
S-49	Soil	0.007	0.66
S-50	Soil	0.007	0.60
S-51	Soil	0.008	0.24
S-52	Soil	0.036	0.61
S-53	Soil	0.020	0.97
S-54	Soil	0.078	0.49
S-55	Soil	0.070	0.51
S-56	Soil	0.017	0.37
S-57	Soil	0.016	0.92
S-58	Soil	0.004	0.21
S-59	Soil	0.001	0.12
S-60	Soil	0.023	2.00
S-61	Soil	0.032	2.15
S-62	Soil	0.017	0.24

Lucy Project

Hand Channel Sampled Trench Data

Trench_Id	Azimuth	Total Length (m)
Trench 2	320	40

Complete Assay Results of Hand Channel Sampled Trench

Trench_Id	From (m)	To (m)	Interval (m)	Sample_Id	Au g/t	Ag g/t	Zn %
Trench-2	0	5	5	R-12759	0.142	4.00	0.077
Trench-2	5	10	5	R-12760	0.178	39.00	0.042
Trench-2	10	15	5	R-12761	0.061	6.00	0.052
Trench-2	15	20	5	R-12762	0.249	1.00	0.108
Trench-2	20	25	5	R-12763	0.309	11.00	0.075
Trench-2	25	30	5	R-12764	1.120	15.00	0.257
Trench-2	30	35	5	R-12765	0.569	1.00	0.293
Trench-2	35	40	5	R-12766	3.670	2.00	0.185

Significant Trenching Results

Hand Channel Sampled Trench

Trench_Id	Width (m)	Au g/t	Ag g/t	Zn %
Trench 2	20	1.42	7.25	0.20

Lucy Project

Rock Channel Sampling Sections (Published NR1-2018)

Trench_Id	Azimuth	Total Length (m)
T1_18	100	30
T2_18	285	10

Complete Assay Results of Rock Channel Sampling Sections

Trench_Id	From (m)	To (m)	Interval (m)	Sample_Id	Au g/t	Ag g/t	Zn %
T1-18	0	3	3	R-12461	4.890	26.40	3.890
T1-18	3	6	3	R-12462	4.590	26.80	8.400
T1-18	6	9	3	R-12463	3.830	11.40	4.320
T1-18	9	12	3	R-12464	4.530	19.90	4.220
T1-18	12	15	3	R-12465	0.337	4.80	1.715
T1-18	15	18	3	R-12466	0.008	<0.5	0.394
T1-18	18	21	3	R-12467	0.400	10.10	4.290
T1-18	21	24	3	R-12468	0.144	10.70	1.700
T1-18	24	27	3	R-12469	0.386	18.00	2.830
T1-18	27	30	3	R-12470	0.124	41.40	1.955
T2-18	0	5	5	R-12457	0.746	0.70	0.874
T2-18	5	10	5	R-12458	2.230	0.80	0.397

Significant Rock Channel Sampling Sections Results

Trench_Id	Width (m)	Au g/t	Ag g/t	Zn %
T1_18	30	1.924	17	3.371
T2_18	10	1.488	-	0.636